

FREEHOLD



Park home

45 WOODLAND VIEW, CROMER ROAD, STRATTON STRAWLESS, NORWICH, NR10

Price Guide

£95,000

FEATURES

- Two bedrooms
- No onward chain
- Shower room
- Peaceful country site
- Detached park home
- Generous accommodation throughout
- Communal car park



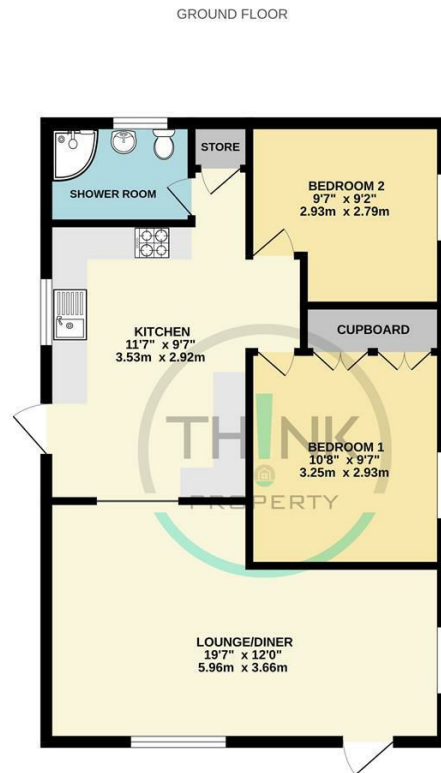
2 Bedroom Park home located in Norwich

Nestled in the serene surroundings of Countryside Park in Stratton Strawless, Norwich, this charming two-bedroom detached park home offers a delightful retreat for those seeking a peaceful lifestyle. Measuring an impressive 30ft x 20ft, the property boasts a bright and airy lounge that invites natural light, creating a warm and welcoming atmosphere.

The generous kitchen is well-equipped, providing ample space for culinary endeavours and family gatherings. Both bedrooms are thoughtfully designed to ensure comfort and relaxation, while the modern shower room adds convenience to daily living.

The home is heated by efficient LPG gas, ensuring warmth during the cooler months. Outside, the shingled gardens provide a low-maintenance outdoor space, perfect for enjoying the fresh air or hosting small gatherings.

Situated within a picturesque countryside park, this property offers a unique opportunity to embrace a tranquil lifestyle while remaining within easy reach of local amenities. This park home is a splendid choice for those who appreciate the beauty of rural living.



Whilst every attempt has been made to ensure the accuracy of the floorplan contained here, measurements of doors, windows, rooms and any other items are approximate and no responsibility is taken for any error, omission or misstatement. This plan is for guidance purposes only and should be used as such by any prospective purchaser. The services, systems and appliances shown have not been tested and no guarantee as to their operability or efficiency can be given.
Made with Metagap ©2025

Call us on

01603 338433

norwich@thinkproperty.ltd

<https://www.thinkproperty.ltd/>

Council Tax Band

A

Agents Note: Whilst every care has been taken to prepare these particulars, they are for guidance purposes only. All measurements are approximate and are for general guidance purposes only and whilst every care has been taken to ensure their accuracy, they should not be relied upon and potential buyers are advised to recheck the measurements.

